



reinvent the way you work

PROJECT PROFILE

The Walbec Group

Waukesha, WI | 2022



The Walbec Group was looking to expand their operations and create a branded workspace for their support services teams including Human Resources, Safety, Purchasing, and Environmental within their family of companies. The new space promotes forward-thinking and a hardworking culture with a design that attracts and retains talent.

FAST FACTS:

With a short timeframe for occupancy, BSI partnered with Workshop Architects and Selzer-Ornst to assist with interior design and provide furniture and finish selections. Workshop Architects discovered a need from employees for access to natural light, flexibility, but also privacy for the teams in this building. These concepts were incorporated into the design and interiors of the building. It was also important that their brand was well-represented throughout the space using colors and materials.

Besides the challenges of making employees comfortable in the office, post-pandemic, this project was also met with supply chain delays on the construction and furniture sides of the project. Working well as a team, the collection of partners on this project were able to complete the fast-tracked project in time for opening in January 2022. The colorful, collaborative nature of the environment supports the original project goals – providing a productive space for The Walbec Group.

PROJECT SIZE:

18,930 Square Feet

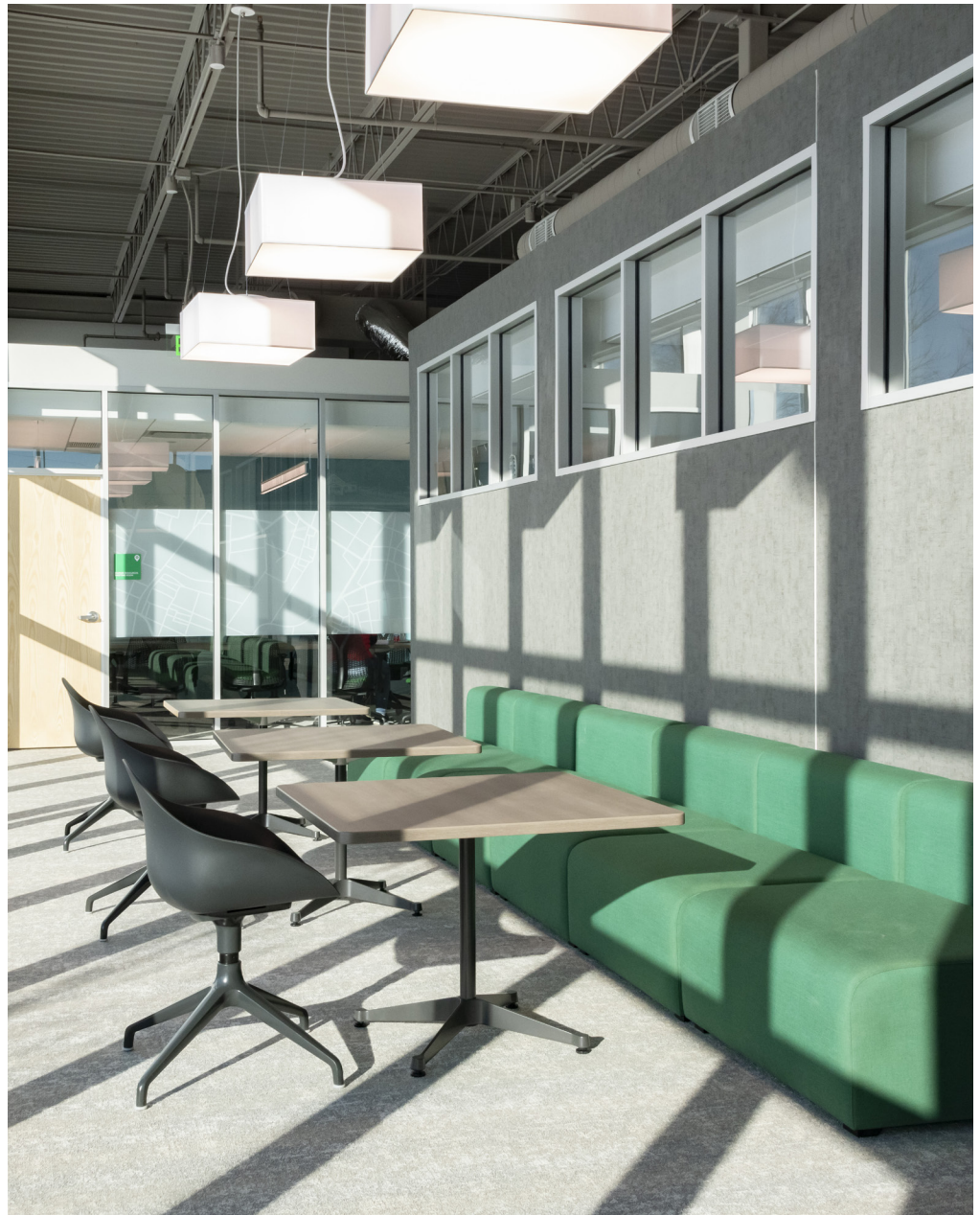
PROJECT DURATION:

9 Months

COMPLETED: January, 2022

BSI SERVICES:

- Interior Design
- Finish & Furniture Specification



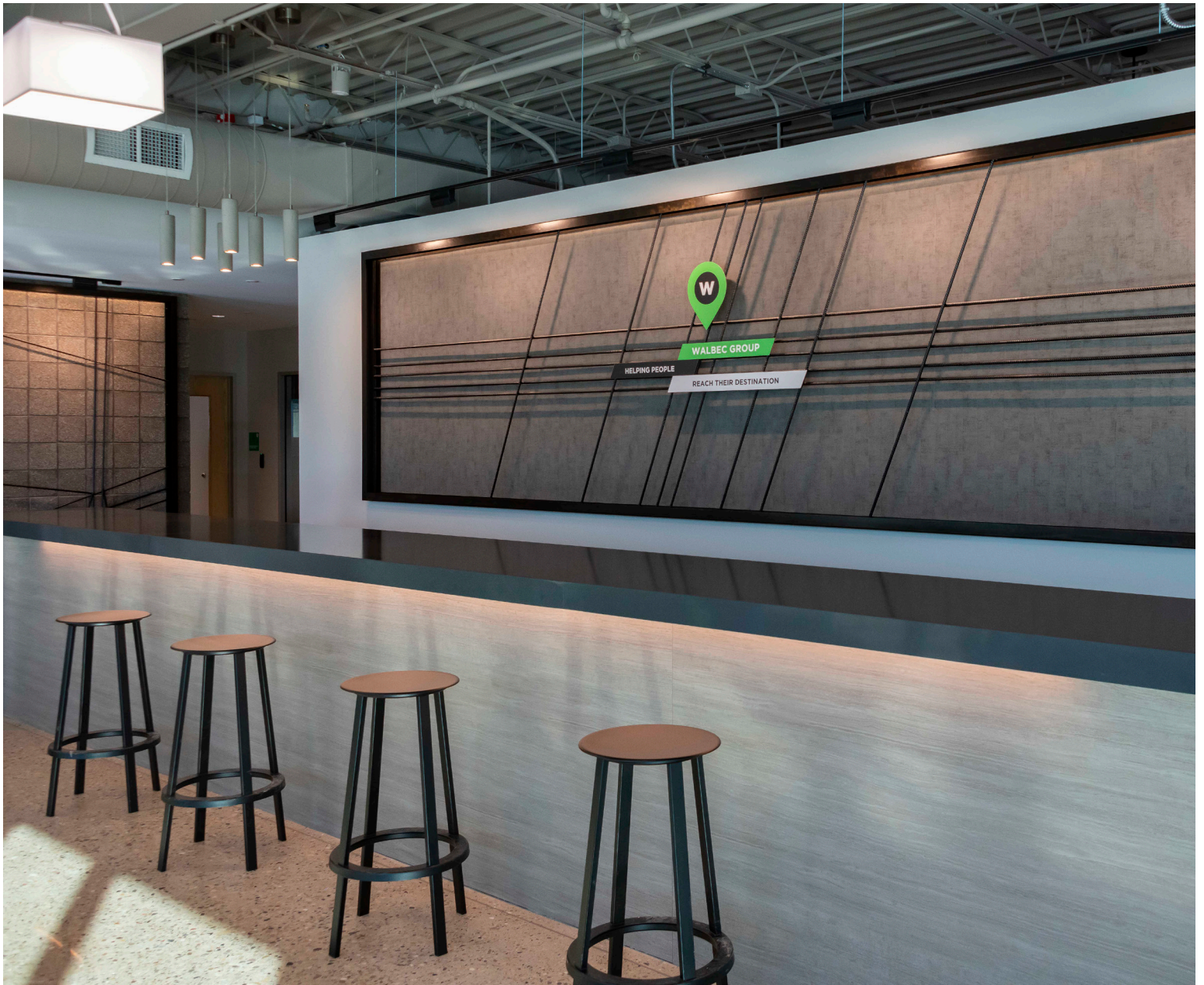
Casual, Collaborative Meeting Space



Branded Conference Room



Private Office



Inviting Entertainment Lobby Featuring Custom Rebar Artwork



Centrally Located Work Lounge



Open Dining / Cafe Area



Touchdown Meeting Area with Mobile Work Tools



Open Area Collaboration with Technology



Touchdown Meeting Area



Casual Lobby Setting With Variety of Seating Styles

"BSI was the right furniture partner for The Walbec Group's newest office. From day one, they listened to our needs and came to the table with the right solutions to meet our goals. The result is a beautiful space with workstations, collaborative areas, and conference rooms uniquely designed to embody Walbec's brand, support individual focus, and facilitate intentional teamwork."

-Bridget Kraus

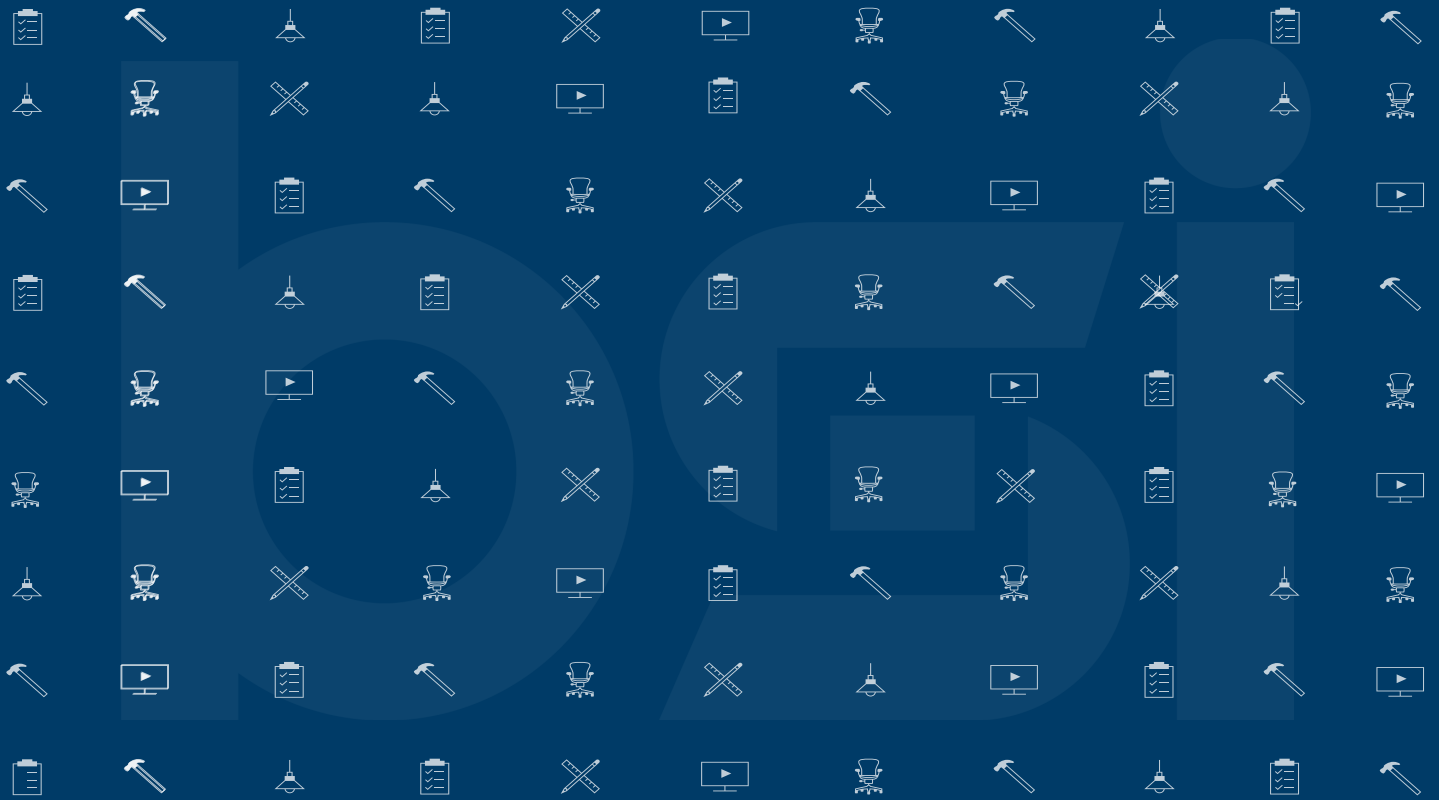
Vice President of Marketing, The Walbec Group



Lounge Seating



Multipurpose Cafe Area



reinvent the way you work



BSI CORPORATE OFFICE
W222 N630 Cheaney Rd.
Waukesha, WI 53186
262.955.6400

BSI NORTH OFFICE
2920 N. Ballard Rd. Ste B
Appleton, WI 54911
920.735.3636

www.buildingservice.com